



AUSTRALIA'S COASTAL  
WILDERNESS SERIES

NEW 2021 EXPEDITIONS

# AUSTRALIA'S WILD COASTLINES

SOUTH AUSTRALIA | GREAT AUSTRALIAN BIGHT | WEST COAST



SailSAFE

Our Health & Safety Plan for guests & crew

- › Wild Islands & Walks of South Australia
- › Across the Great Australian Bight
- › Abrolhos Islands & the Coral Coast



**coralexpeditions**  
AUSTRALIA'S PIONEERING CRUISE LINE



Birdwatching



Walking  
& Hiking



Kayaking



Wildlife  
Spotting



UNESCO World  
Heritage sites



Historical  
landmarks



Maritime  
History



Local Food  
Experience



Snorkelling



Workshops  
& Lectures

# AUSTRALIA'S COASTAL WILDERNESS FOR TRUE EXPLORERS

Our new voyages in 2021 are a retreat to the remote and varied attractions of Australia's coastline. 35 years ago, Coral Expeditions pioneered extended expeditions in the Great Barrier Reef. We followed up with the first expedition cruises to the Kimberley coast, Cape York and Arnhem Land, and then to Tasmania. In 2021, we draw on our pioneering spirit to explore the outer edges of the Australian continent including small islands and reefs, world heritage areas, national parks and rugged shorelines.

This new series begins with state-of-the art expedition vessel *Coral Adventurer* taking in the harsh beauty of the Southern coast with two unique voyages that track westwards across the Great Australian Bight and onto Fremantle. Our final voyage explores the uninhabited island outposts of the West Coast before arriving in Broome.

These voyages offer true explorers the rare opportunity to visit natural destinations inaccessible to most. Enjoy intimate encounters with our endemic marine species, native animals, and seabirds. Learn about the history and geology of the land from our expert expedition guides and lecturers. And after a day exploring, enjoy warm Australian hospitality, and cuisine and wine inspired by regional Australia.

Find freedom in Australia's coastal wilderness this summer.

## INCLUSIONS

- > All excursions and sightseeing
- > Use of Xplorer, Zodiacs and kayaks
- > Daily lectures and briefings
- > All meals, chef-prepared on board
- > Selected wines, selected beers, selected spirits, juices, and soft drinks served with lunch and dinner
- > Coffee and selection of teas
- > All entrance fees to National Parks and Ports
- > Choice of local operator excursions at some locations
- > Tips and gratuities

## EXPEDITION NOTE

These are expedition itineraries covering remote regions. Your Captain and Expedition Team will make changes to the daily schedule when necessary to maximise your experience. These itineraries are indicative - some variation may occur due to weather conditions, safety or local community requirements.

We recommend that you do not arrive to the embarkation port on the day of boarding or depart on the day of disembarkation due to unexpected changes that may occur in scheduling.

## Australian Hospitality at Sea

On board, you will discover a personalised style of cruising. With a maximum of 100 guests, there is no need for queues, waiting, or assigned seating. Instead, an intimate, convivial atmosphere shared with other like-minded travellers makes you feel at home.

Our Australian and New Zealand crew share their passion for our destinations and the explorer's life. Join our engine room tours, watch our chefs at work in the open galley, and chat with our Captain or officers on the bridge - they will be delighted to have your company.

Our chefs, inspired by destination flavours, prepare cuisine from fresh regional produce. Our wine cellars hold a curated selection of Australian wines, beers and spirits.

Our guests love to mingle over drinks as the sun sets, enjoy daily educational presentations by our lecturers, participate in stargazing sessions after dark, or simply find a quiet corner on deck and enjoy the solitude.

## The Expedition Experience

We explore remote locations that are hard to reach or not often touched by tourists, with shore excursions that promote environmental and cultural appreciation. Our small group sizes ensure that your experience is personal, with minimal impact on the communities and environments we visit.

Enjoy excursions or activities each day, guided by expert Expedition Leaders and lecturers who provide commentary on culture, history, and the region's unique geology, plants and wildlife to help you connect with these special places.

Our ships are built for environmentally responsible small-ship cruising, with refined navigation and nimble Xplorer tenders to bring you close to remote coastlines.

## SailSAFE

Our Health & Safety Plan for guests & crew

## Our SailSAFE Plan

It is our priority to keep our guests and crew safe while travelling with us, and our SailSAFE Plan will ensure we operate responsibly in the new environment that COVID-19 has created.

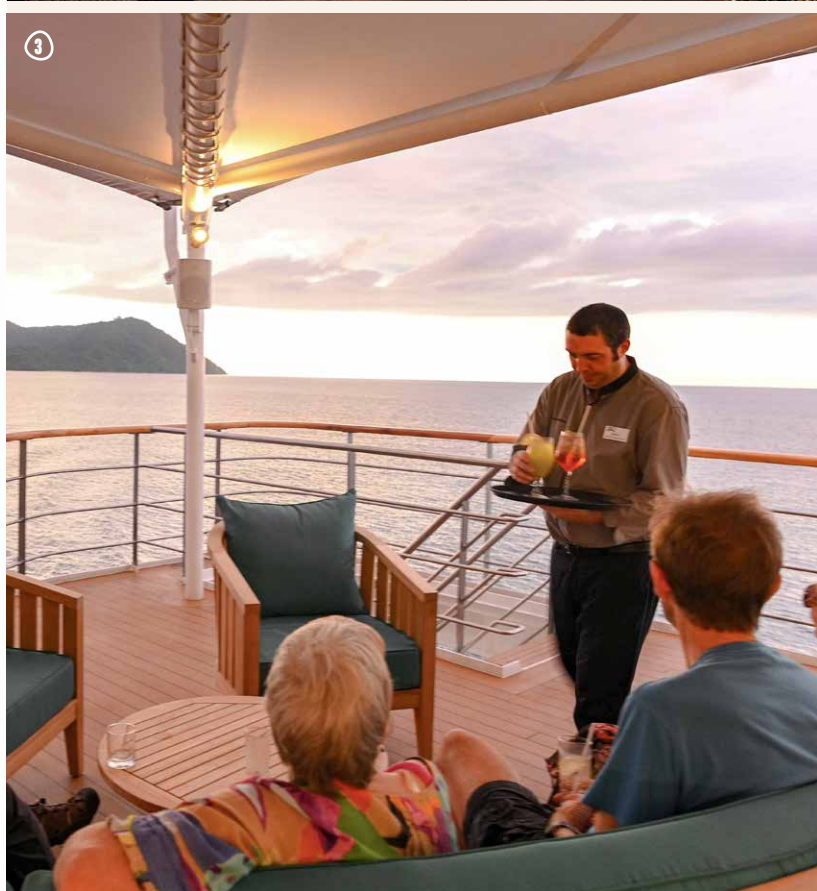
Remote, nature-based expeditions with Australian and New Zealand crew, and small groups less than 100 guests provides a lower-risk environment. The addition of our approved SailSAFE COVID response plan, as well as our thorough pre-cruise testing model, create additional confidence when sailing with us.

We have partnered with Respond Global, a specialist medical advisory agency, to assist us in developing these protocols that are among the most thorough in the world.

With a focus on prevention, to target a 100% COVID free environment when we set sail, we have a three-tiered medical screening system in place before boarding. This prevention protocol is supported by onboard mitigation actions and a thorough and compassionate response plan.

Read more:

[www.coralexpeditions.com/au/about-us/sailsafe-plan/](http://www.coralexpeditions.com/au/about-us/sailsafe-plan/)



# WILD ISLANDS & WALKS OF SOUTH AUSTRALIA

①

## Expedition Highlights

- › Spend time at Antechamber Bay and Western River Cove to explore Kangaroo Island's north coast, and the wonderful beaches, history and wildlife
- › Learn how to shuck your own fresh oysters at Coffin Bay
- › Be rewarded with striking views and peaceful native forest environs on the great South Australian walking trails
- › Discover the forgotten history of Wedge Island and its secret radar station
- › Encounter the inquisitive sea lions at Hopkins Island
- › Spot little penguins at Troubridge Island
- › Visit Eyrewoolf Abalone on Flinders Island to taste freshly caught abalone and seafood, and learn the history of this island from the Woolford family
- › Enjoy sunset cruises past the stunning coastal formations of Cape Jervis, Kangaroo Island, Neptune Island and Pearson Island and Whaler's Way

## DEPARTURE & FARES

10 Nights - Departs: 10 February 2021 from Adelaide aboard *Coral Adventurer*

	Bridge Deck Balcony Suite	Bridge Deck Stateroom	Explorer Deck	Promenade Deck	Coral Deck
<b>Twin Share</b>	\$13,190	\$9,890	\$9,290	\$7,490	\$6,390
<b>Sole Use</b>	n/a	n/a	\$13,935	\$11,235	\$9,585

Prices are per person, listed in Australian Dollars (AUD) and include GST.

\*Limited sole use occupancy available.

IMAGES +1 Kangaroo, credit Tourism Australia | 2 An inquisitive sea lion

3 Kangaroo Island coast, credit Isaac Forman | 4 Hiking through coastal forest trails



③



## ITINERARY: 10 NIGHTS ADELAIDE TO ADELAIDE

### DAY 1: DEPART ADELAIDE

Board *Coral Adventurer* at 4:00pm for 5:00pm departure.

### DAYS 2-10:

*Your Expedition Team may make changes to the itinerary in order to maximise your expedition experience. Below are the key destinations we visit.*

#### TROUBRIDGE ISLAND

Troubridge Island Conservation Park is an important breeding area for birds and is home to a large colony of little penguins, black-faced cormorants, and crested terns – an ideal environment for bird enthusiasts. Spend the day relaxing on the white-sand beaches, or visit the site of the lighthouse, built in 1856. This evening, watch the sunset light up the rocky coast as we cruise past Cape Jervis.

#### ANTECHAMBER BAY, KANGAROO IS

Antechamber Bay is one of Kangaroo Island's finest coastal havens. Here, enjoy beach walks along the bay or swim in the turquoise water. Choose to kayak up the Chapman River, or walk to discover historic grave sites and the memorial to Aboriginal Women brought to Kangaroo Island. Spend time hiking the rocky headland to the Cape Willoughby Light Station, circled by crashing waves, and also tour the Lighthouse Keeper's cottage.

#### WESTERN RIVER COVE

Today, land at isolated Western River Cove to visit the beautiful historic homestead, and observe the effects of the recent bushfires and subsequent recovery. There may be an opportunity to meet the homestead owners and hear their stories. A walk along the ridge reveals spectacular views of the valley, and the beach offers excellent snorkelling or swimming. Weather permitting, visit beautiful Kangaroo Beach. Later, cruise past the sea cliffs at Cape Borda for wonderful views.

#### LINCOLN NATIONAL PARK

The Lincoln National Park is cloaked in windswept eucalypt and she-oak forests, home to many bird species, including the rare western whipbird. At Memory Cove, stroll through dense bushland and emerge atop the cliffs to enjoy spectacular views of the Southern Ocean and the islands scattered throughout the Spencer Gulf. Later, at Hopkins Island, we will encounter inquisitive Australian sea lions, an unforgettable experience. This evening, cruise past Cape Catastrophe and along Whaler's Way, hearing the fascinating stories of this rugged coastline and observing the sunset light up the spectacular cliffs.

#### COFFIN BAY NATIONAL PARK

The pristine waters of Coffin Bay are home to numerous pods of dolphins, sea lions, and seals. Emus and kangaroos

roam and the natural beauty of this area is the backdrop to your day's adventures.

Here, enjoy an unforgettable food experience – hop into some waterproof waders and take a seat at the Saltwater Pavilion to shuck and taste your own delicious Coffin Bay Oysters.

Later, hike through the Coffin Bay National Park and enjoy interpretation of the landscape, and snorkel or kayak with the chance to spot some of the marine life. We may visit 7 Mile Beach to wander through the beautiful dunes.

#### FLINDERS ISLAND

Located around 35kms from the Eyre Peninsula Coast, Flinders Island has a long history of sealing, whaling, and farming. Owned by the Woolford family since 1979, they run an established sheep farm, abalone harvesting business and are working to establish a Safe Haven for vulnerable native species. Meet the Woolford family to learn about the history and conservation projects on the island. Visit the *Kapara* shipwreck at Bryant's Bay, and stroll through the shearing sheds at the farm. Taste fresh abalone and other local seafood at Eyrewoolf Abalone. This evening, cruise past protected Pearson Island in the light of the setting sun.

#### THISTLE ISLAND

Located in the Spencer Gulf, Thistle Island has a fascinating sealing and whaling history. Here, we will take leisurely walks to spot birds and relax on the beach.

#### CAPE DONINGTON & REEVESBY ISLAND

Start your day with a visit to Reevesby Island that reveals the history of this remote region. Visit an important seabird breeding site and hike to the historic homestead. This chain of islands offers sheltered bays, golden sand beaches and reefs teeming with marine life. Later, enjoy a refreshing dip at Cape Donington before hiking to Stamford Hill and the Flinders Monument. Spot western grey kangaroos, emus or goannas, or see long-nosed fur seals or Australian sea lions on the rocks.

#### WEDGE ISLAND

The rich sea-life around these islands attracts top predators including white pointers, and we might spot marine activity as we cruise to Wedge Island. This island was used as a secret radar station during WWII. Wedge Island is also home to unique Australian fauna – you might spot endangered Bettong, Fairy Penguins, Rock Wallabies, Emus, Wombats, and a large variety of bird species. This evening, enjoy sunset drinks as we cruise past the Althorpe Island Lighthouse.

### DAY 11: ARRIVE ADELAIDE

This morning, we arrive in Adelaide at 7:30am to disembark at 8:30am.



#### QUENTIN CHESTER > GUEST LECTURER

Quentin is a writer, photographer and outdoor guide who has led treks from the Himalayas to the Flinders Ranges. A resident of Kangaroo Island, Quentin's deep knowledge of the region is shared through conservation projects and guiding roles.



2



4

# ACROSS THE GREAT AUSTRALIAN BIGHT

①

## Expedition Highlights

- Discover Kangaroo Island's stunning North Coast beaches
- Get close to the large stingrays and eagle rays that swim in the shallows of Hamelin Bay
- Indulge in a tour and cellar door experiences in the award-winning Margaret River wine country
- Climb Cape Leeuwin lighthouse, the tallest on mainland Australia, to take in the view over the Southern Ocean
- Stroll through breath-taking Jewel Cave at Augusta and learn about its formation over thousands of years
- Relax and enjoy sunset drinks alongside the friendly kangaroos at Lucky Bay
- Discover the wild islands of the Archipelago of the Recherche and follow the snorkel trail at Shearwater Bay
- Learn to shuck your own delicious oysters fresh from the waters of Coffin Bay

## DEPARTURE & FARES

13 Nights - Departs: 21 February 2021 from Adelaide aboard *Coral Adventurer*

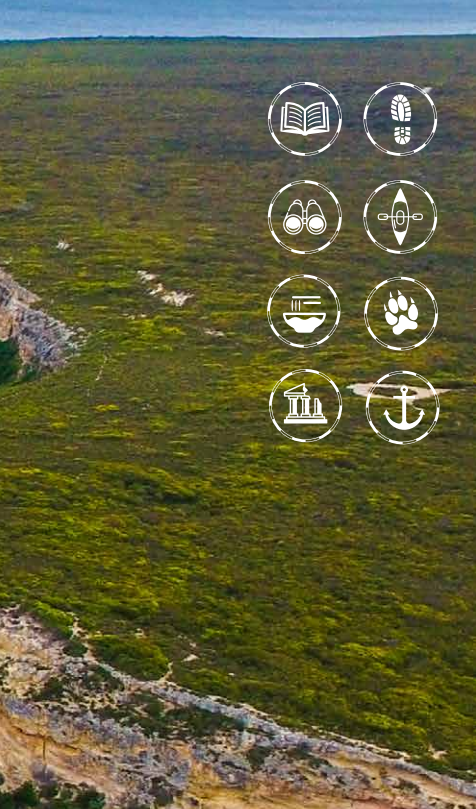
	Bridge Deck Balcony Suite	Bridge Deck Stateroom	Explorer Deck	Promenade Deck	Coral Deck
Twin Share	\$17,190	\$12,890	\$12,190	\$9,790	\$8,290
Sole Use	n/a	n/a	\$18,285	\$14,685	\$12,435

Prices are per person, listed in Australian Dollars (AUD) and include GST.

\*Limited sole use occupancy available.

**IMAGES** +1 Coast at Karatta, credit SATC | 2 Oyster Farm Shop, credit Josie Withers  
3 Woody Island snorkelling, credit Tourism Western Australia | 4 Kangaroo at Lucky Bay, credit Sean Scott Photography





## ITINERARY: 13 NIGHTS ADELAIDE TO FREMANTLE

### DAY 1: DEPART ADELAIDE

Board *Coral Adventurer* in Adelaide at 4:00pm for a 5:00pm departure.

### DAYS 2-13:

*Your Expedition Team may make changes to the itinerary in order to maximise your expedition experience. Below are the key destinations we visit.*

### KANGAROO ISLAND

Today, explore the northern coastline of Kangaroo Island, a place where feelings of space and freedom fill the senses. Steep cliffs give way to white-sand beaches where sea lions laze. Snorkel at Snelling Beach or swim in the clear waters of Emu Bay. Visit secluded Stokes Bay, where a rock-enclosed pool provides a protected swimming spot, and stroll along the beach looking for penguins, dolphins, or seals.

### COFFIN BAY

Today, arrive in tranquil Coffin Bay. Enjoy a swim, snorkel, or kayak and spot marine life as you explore the surrounding water ways, before a once-in-a-lifetime culinary experience. Wade out into the water at Coffin Bay Oyster Farm to taste oysters fresh out of the sea and learn how to shuck an oyster. Prepare for a seafood taste sensation!

### NUYTS ARCHIPELAGO

Today, arrive at the marine reserve of the Nuyts Archipelago. Once the location of whaling and sealing activity, today the Archipelago is a Conservation Park for endangered species. Go ashore to spot wildlife including numerous birds and native marsupials, sea eagles, Australian sea lions, penguins, fur seals and dolphins.

### GREAT AUSTRALIAN BIGHT

Our crossing of the Great Australian Bight is an exciting moment for those who love the sea. The Great Australian Bight Marine Park protects southern right whales and is home to 80% of the Australian sea lion population.

### CAPE ARID N.P.

The wilderness of Cape Arid, pristine due to its remoteness, is an important conservation area for 1,100 species of plants and more than 160 bird species. Relax on Yokinup Bay's broad white beaches washed by blue seas, and birdwatch at Thomas River estuary. We may have the opportunity to explore historic whaling station ruins.

### CAPE LE GRAND N.P.

Cape Le Grand National Park's massive granite peaks, rolling heath-lands and sweeping beaches are spectacular and kangaroos are known to laze on the white sand of Lucky Bay. Enjoy a swim in the turquoise water, or hike a section of the Le Grand Coastal Trail, where you may spot pygmy possums, western grey kangaroos

and many colourful native wildflowers. As the sun sets, enjoy sunset drinks on the beach alongside the curious kangaroos.

### RECHERCHE ARCHIPELAGO

The Recherche Archipelago is a vast group of islands and rocky outcrops scattered across the blue waters of the Southern Ocean. Explore Woody Island for hiking and birdwatching, and experience the snorkel trail at Shearwater Bay.

### BREMER BAY

This tiny coastal town is renowned for having some of the most beautiful beaches in the world. Spend the afternoon swimming, snorkelling or relaxing on the beach. The tranquillity of the surroundings, and the opportunity to observe the unique marine life of the area, make Bremer Bay a memorable stop.

### ALBANY

Discover the town of Albany with a choice between the whaling station tour on the edge of Torndirrup National Park, or the Point Possession Heritage Trail along the cliffs to enjoy magnificent views. Later, learn the history at the Brig Amity Replica and Museum of the Great Southern.

### AUGUSTA

Augusta is our gateway to the naturally beautiful South West. Today, climb the historic Cape Leeuwin Lighthouse, built in 1896, and discover the exploration history of the region. Explore Jewel Cave, known for its crystal-encrusted decorations of delicate helictites and stalagmites. Later, enjoy free time to explore the township.

### HAMELIN BAY & MARGARET RIVER

Hamelin Bay, a serene sandy bay, is famous for the abundance of stingrays that swim in the shallows. Snorkel or wade alongside these giant rays, before a walk to a nearby lake for birdwatching. Spend the afternoon in the beautiful Margaret River wine region, and relax on a luxury coach tour to enjoy tastings and cellar-door visits at leading wineries.

### CAPE NATURALISTE

Cape Naturaliste is known for its spectacular scenery and some of the best walking tracks in the Margaret River Region. Today explore these walking trails, and visit the Cape Naturaliste Lighthouse before spending some free time in the charming town of Dunsborough. Later, visit stunning Meelup Beach for sunbathing and swimming, followed by sunset drinks on the beach.

### DAY 14: ARRIVE FREMANTLE

This morning, we arrive in Fremantle at 7:30am to disembark at 8:30am.

# ABROLHOS ISLANDS & THE CORAL COAST

①

## Expedition Highlights

- > Discover the fascinating history and natural wonders of the Abrolhos Islands, as you swim with friendly sea lions and snorkel over the fringing reefs
- > Explore World Heritage Shark Bay with visits to Francois Peron National Park & Dirk Hartog Island, to discover the history and abundant wildlife of this region
- > Discover World-Heritage listed Ningaloo Reef with scuba diving and snorkelling from the beach at Turquoise Bay
- > Discover sites of cultural significance to Indigenous Australians, including the Dampier Archipelago petroglyphs, with expert interpretation
- > Learn about the coast's maritime history, with stories of the wrecks of the *Barque Stefano* off Northwest Cape, the *Trial* near the Montebellos, and *Batavia* at the Abrolhos
- > Birdwatch at the Muiron Islands and Montebello Islands, known for their large populations of nesting seabirds

## DEPARTURE & FARES

12 Nights - Departs: 10 March 2021 from Fremantle aboard *Coral Adventurer*

	Bridge Deck Balcony Suite	Bridge Deck Stateroom	Explorer Deck	Promenade Deck	Coral Deck
<b>Twin Share</b>	\$21,690	\$16,490	\$15,490	\$12,390	\$9,290
<b>Sole Use</b>	n/a	n/a	\$23,235	\$18,585	\$13,935

Prices are per person, listed in Australian Dollars (AUD) and include GST.

\*Limited sole use occupancy available.

IMAGES + 1 Snorkelling at Ningaloo Reef | 2 Birdwatching from zodiacs

3 Seal on Abrolhos Islands, credit Australia's Coral Coast | 4 Coral life, Ningaloo





## ITINERARY: 12 NIGHTS FREMANTLE TO BROOME

### DAY 1: DEPART FREMANTLE

Board *Coral Adventurer* at 8:00am for a 9:00am departure.

### DAYS 2-12:

*Your Expedition Team may make changes to the itinerary in order to maximise your expedition experience. Below are the key destinations we visit.*

### THE ABROLHOS ISLANDS

Spend three days in the Houtman Abrolhos Islands, visiting historical sites, birdwatching, diving or snorkelling with the inquisitive Australian sea lions. This archipelago consists of 122 islands, clustered into three main groups. Enriched by the Leeuwin current, the marine environment is home to numerous species including Australian sea lions and bottlenose dolphins, and over 90 species of seabird have been identified. The treacherous reefs around these islands have claimed many wrecks over the centuries, the most famous being the *Batavia* in 1629 - whose Dutch crew swam ashore only to experience a brutal mutiny.

### SHARK BAY REGION

Spend two days exploring the Shark Bay World Heritage Area, the first location in Western Australia to receive UNESCO World Heritage status in 1991. This is a region of colourful landscapes, rare flora and fauna, and home to a staggering 35% of all of Australia's bird species.

On Dirk Hartog Island, visit Dampier's Landing, where William Dampier came ashore in 1699, making the first scientific collection of Australian plants.

Later, snorkel over the coral reef from the beach at Louisa Bay. Cabbage corals dominate this area, but there are also staghorns and massive pocillopora. Spot coral trout, blue-lined emperor, scribbled angelfish and potato cod.

The next day, explore Francois Peron National Park, named after the naturalist on explorer Nicholas Baudin's expeditions. Go ashore by Xplorer to be met by local Indigenous guides and park rangers.

### NINGALOO REEF & CAPE RANGE N.P.

The World Heritage listed Ningaloo Reef is the turquoise jewel in the crown of the Western Australian coastline. Spanning over 5,000 square kilometres, this is one of the largest fringing reefs in the world. It's inner and outer reefs create a diverse range of habitats for vibrant corals and more than 500 species of fish including mega marine life such as humpback whales, manta rays, and whale sharks.

It is also a coastline with a fascinating heritage, where lonely whalers battled it out against the elements.

Snorkel from the beach and relax at stunning Turquoise Bay, visit Yardie Creek via a 1.2km Nature Walk, or visit Vlamingh Head lighthouse. There will also be free time in Exmouth.

### MUIRON ISLANDS

The secluded Muiron Islands are located 10 nautical miles off North West Cape. Well known for an incredible reef, many turtles, and even sightings of manta rays, the islands offer a variety of dive sites. With fantastic bommies and protected reef, snorkellers will appreciate the variety of soft corals and gorgonians as well the incredible fish life. Birdlife is abundant - spot wedge-tail shearwaters, roseate terns, osprey, and black-shouldered kites.

### MONTEBELLO ISLANDS

The Montebello Islands are an archipelago of more than 250 limestone islands and islets off the coast of the Pilbara. The islands are considered an Important Bird Area, as they support over 1% of the world populations of fairy and roseate terns, as well as Sooty Oystercatchers.

The islands have an 'explosive' past as the site of three British atomic weapons tests in the 1950s. Visit the plinth which marks Ground Zero at Trimouille Island, where you will now find a haven for wildlife.

Spend a full day exploring this island group, including wildlife spotting opportunities and beautiful beaches to enjoy a swim. You might spot the rare rufous hare-wallaby and lagoon rays in the tidal pools.

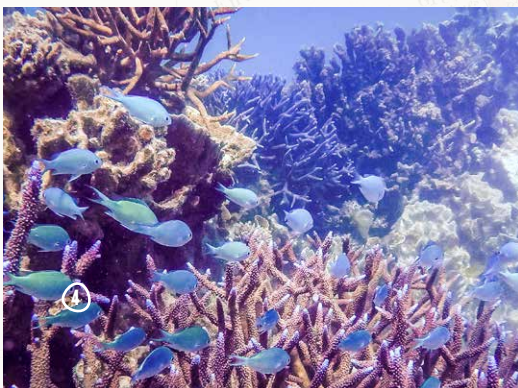
### DAMPIER ARCHIPELAGO

The 42 iron-red islands of the Dampier Archipelago stand in bright contrast to the turquoise waters which surround them, offering exceptional natural beauty and significant historic sites, many of which are in National Heritage Listed Areas. The earliest inhabitants, the Yaburara people, left thousands of rock engravings, shell middens and stone arrangements across the islands.

Here, search for ancient petroglyphs, swim in the vibrant blue water or paddle out for a leisurely kayak from the remote island beaches. Take some time to enjoy bird and wildlife spotting - bottlenose dolphins are regularly seen in this area, and the archipelago supports the largest hawksbill turtle rookery in the Indo-Pacific region. Birdwatchers will have the opportunity to see several species of migratory waders as well as sea eagles and ospreys. With some luck we may even see the elusive Rothschild's rock wallaby.

### DAY 13: ARRIVE BROOME

This morning, we arrive in Broome at 7:00am to disembark at 8:00am.



# CORAL ADVENTURER

Launched in 2019, *Coral Adventurer* features the advanced technologies and environmentally-responsible design. *Coral Adventurer* is built for environmentally responsible small-ship cruising, with refined navigation and nimble Xplorer tenders to bring you close to remote coastlines. Carrying up to 120 guests, her intimate atmosphere and warm Australian hospitality quickly make you feel at home. All staterooms are outside facing and many have private balconies. Expansive deck spaces and access to the open bridge provide an authentic expedition experience. Spacious lounge areas, communal dining, and large windows with panoramic views encourage relaxation and the opportunity to spend time with old and new friends.

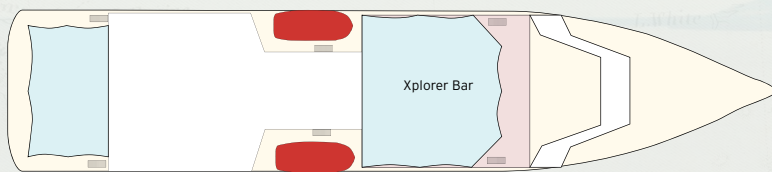
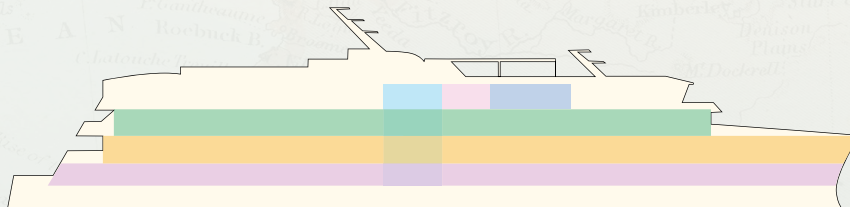




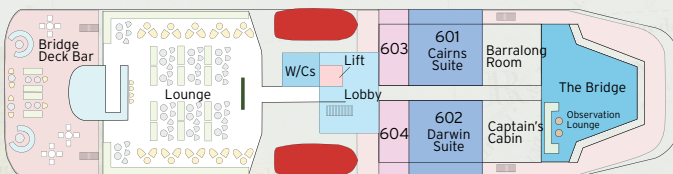
## FEATURES

- > Two Xplorer tenders & six Zodiacs
- > Open Bridge with Navigator Lounge
- > Single seat dining
- > Three cocktail bars
- > Well-equipped gym
- > Passenger elevator
- > Anchor-free technology

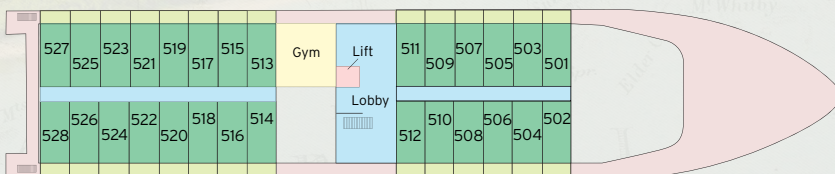
- Bridge Deck Balcony Suites  
• 55.8sqm • Private Balcony
- Bridge Deck Balcony Staterooms  
• 21.4sqm • Private Balcony
- Explorer Deck Balcony Staterooms  
• 21.4sqm • Private Balcony
- Promenade Deck Staterooms  
• 17sqm • Picture Window
- Coral Deck Staterooms  
• 17sqm • Porthole Window



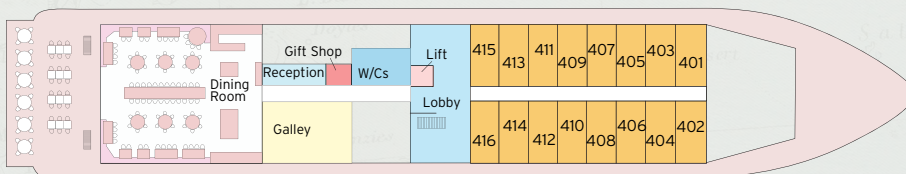
VISTA DECK



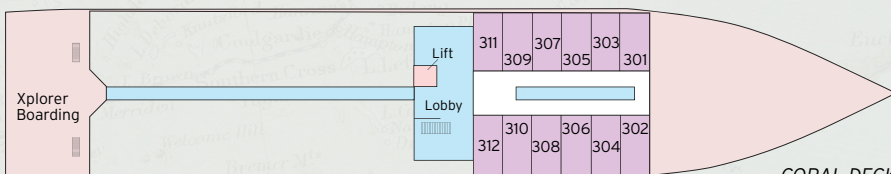
BRIDGE DECK



EXPLORER DECK



PROMENADE DECK



CORAL DECK

- IMAGES** • 1 Bridge Deck Suite | 2 Dining Room  
3 Explorer Deck Stateroom | 4 Chef carving  
roast at dinner | 5 Boarding the Xplorer  
6 Sunset drinks at the Bridge Deck Bar





IMAGES + 1 Seal Bay Conservation Park, Kangaroo Island, credit Ben Goode

SMALL SHIPS  
FEWER THAN  
100 GUESTS

AUSTRALIAN  
PASSENGERS &  
CREW

REMOTE  
NATURE-BASED  
EXPEDITIONS

APPROVED  
SAILSAFE  
PLAN

MEDICAL  
SCREENING  
PRE-CRUISE



**SailSAFE**

Our Health & Safety Plan for guests & crew

Contact us today or speak with your travel agent.

Online [www.coralexpeditions.com](http://www.coralexpeditions.com)  
Email [explore@coralexpeditions.com](mailto:explore@coralexpeditions.com)  
Free call (Australia) 1800 079 545  
Outside Australia +61 7 4040 9999

Head office PO Box 2093 Cairns 4870 QLD Australia  
ABN 51 010 809 417 Issued December 2019



**coralexpeditions**  
AUSTRALIA'S PIONEERING CRUISE LINE